

Strontium®

MOBILE WIFI CLOUD



USB & SD card Reader



Wireless Transfer



Power Charger



QUICK INSTALLATION GUIDE



According to the European WEEE directive, electrical and electronic equipment must not be disposed with consumers waste. Its components must be recycled or disposed apart from each other. Otherwise contaminative and hazardous substances can pollute our environment.

You as a consumer are committed by law to dispose electrical and electronic devices to the producer, the dealer, or public collecting points at the end of the devices lifetime for free. Particulars are regulated in national right. The symbol on the product, in the user's manual, or at the packaging alludes to these terms. With this kind of waste separation, application, and waste disposal of used devices you achieve an important share to environmental protection.

PACKAGE CONTENTS

- 1 x Strontium Mobile WiFi Cloud Hub
- 1 x USB cable A - micro B (for Power DC 5V connection)
- 1 x SD Adapter
- 1 x APP Installation Guide
- 1 x Strontium Mobile WiFi Cloud Installation Guide

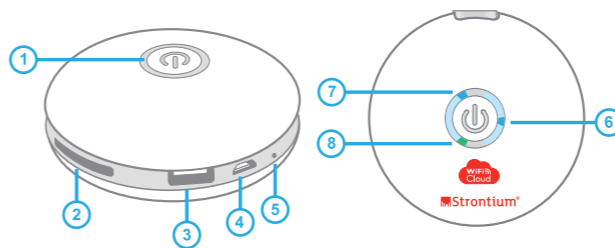
1. Introduction

Strontium Mobile WiFi Cloud is a perfect mobile WiFi Storage Sharer for iPhone/iPad, Android Smart Phone (such as Samsung, HTC, SONY, Moto, ASUS, LG, Acer, ...), Mac Computers and Windows Computers to enhance the limited storage, sharing vast documents and media collections across platforms.

Moreover, it's your UPnP multimedia server! Support UPnP ready Smart TV, UPnP enabled Media Player and Gaming Consoles through WiFi connection to Strontium Mobile WiFi Cloud. Enjoy and share your private photos, videos, documents with a larger display!

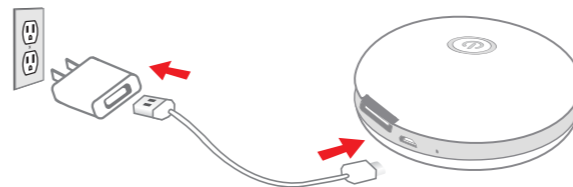
1

2. Configuration



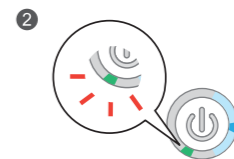
- ① Power On/Off Switch
- ② SD Card slot
- ③ USB Host (female Port)
- ④ Micro USB port for DC 5V in
- ⑤ Reset Button
- ⑥ Power LED Indicator (Blue LED)
- ⑦ Wi-Fi LED Indicator (Blue LED)
- ⑧ Power Charging LED indicator (Green LED)

3. Charging your Strontium Mobile WiFi Cloud

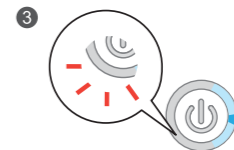


2

- 1 Connect to the Travel Charger (power adaptor) through USB cable A-micro B.



While charging, the Green LED indicator will brighten.



When charging is complete, the Green LED indicator will disappear.



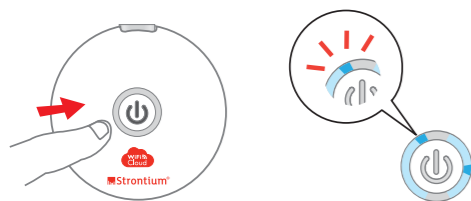
If there is any problem during charging, a Red LED will appear replacing the Green LED.

! Travel Charger (power adaptor) is not included in this package; you can also connect the USB cable provided to a computer to charge.

! For safety reasons, we advise to finish charging before connecting to External Storage Drive.

3

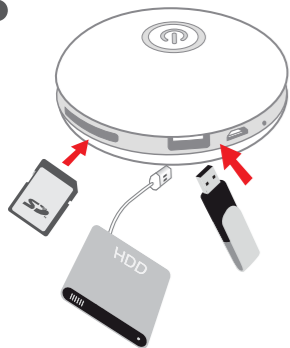
4. Connecting using Wi-Fi



After pressing the Power switch, the Power LED will brighten and the Wi-Fi LED indicator will start to blink. Wait around 40 seconds for the LED indicator to settle on Blue light. Then the Wi-Fi connection is ready.

5. Connecting External Storage Drive

1



You can insert SD Card into the SD Card Slot, or plug-in your USB or Portable Hard Drive through the USB Port.

4

2



Use your device to connect to Strontium WiFi Cloud - WiFi access point. Once connected, you may use Strontium WiFi Cloud App to navigate and browse your external drive.

(For detail instructions please look at Strontium WiFi Cloud installation guide)

6. Tips & Warnings

- ▶ Micro USB plug of USB cable is tightly plugging design, should slowly and carefully plug in and out from Strontium Mobile WiFi Cloud.
- ▶ When you stop using this product, please plug out your USB cable from the Travel Charger (AC power Adapter) or take it out from the AC power outlet for power saving and device protection.

5

- ▶ The DC output of your Travel Charger (AC power adapter) must be over 5V/ 2A when using external USB 2.5" HDD with bus-powered mode. Strontium Mobile WiFi Cloud may be shut down or restart if DC power is not enough to support the external USB 2.5 HDD.
- ▶ The DC output of your Travel Charger (AC power adapter) can be 5V/ 1A and be enough to support the USB flash drive, USB card reader with memory cards, and Digital Camera with USB connection.
- ▶ When your Smart phone/ Tablet failed to connect to Strontium Mobile WiFi Cloud, please check your Smart Phone/ Tablet's Settings → WiFi → Network, to see the Strontium Mobile WiFi Cloud is connected or not.
- ▶ Micro USB port of Strontium Mobile WiFi Cloud is for Power DC 5V connection, not for data connection.
- ▶ The software used by this device underlies the GNU-GPL (General Public License) You can find further information at www.strontium.biz/sites/mobilewificloud_license.zip



CE Declaration:

This device corresponds to EU directive 2004/108/CEC and/EC: With the CE sign Strontium®, a registered trademark of the direct GmbH ensures, that the product is conformed to the basic standards and directives. These standards can be requested online on www.strontium.biz. All trademarks and registered brands are the property of their respective owners.

 **MOBILE WIFI
CLOUD**
model # SRI-CUBa-3KW

 **Strontium®**